

O U T D O O R P R O D U C T S C O L L E C T I O N



AMERICAN F^YRE DESIGNS™
by R H Peterson co.

CRAFTED WITH PRIDE  IN THE USA





AMERICAN FYRE DESIGNS™

by R H PETERSON CO.

Homeowners all over the country have come to realize the allure of fire in their backyards. Fire brings warmth, glow and serenity, encouraging us to relax and unwind. An American Fyre Designs exterior fire feature will anchor your outdoor living space and turn your patio into an outdoor sanctuary inviting conversation that flows well into the night - even when there is chill in the air.

From fireplaces perfect for cuddling up under the stars, to fire tables ideal for entertaining, to fire falls that combine the charm of fire with running water, each product is expertly crafted from innovative glass fiber reinforced concrete (GFRC). GFRC derives its strength from a dosage of alkali-resistant glass fiber and acrylic polymer that results in durable concrete to withstand the outdoor elements. Modularly constructed as easy-to-assemble components, American Fyre Designs products fit easily into most backyards, making installation fast and simple.

American Fyre Designs products are available in a variety of styles, colors and textures to complement any décor. Warm your outdoor living area with American Fyre Designs.

FIREPLACES



Pictured above: Grand Cordova Fireplace (882-20-N-CB-XXC) in Cafe Blanco Finish with Charred Oak log set (CHDG45-24)



Pictured above: #025-01-N-CB-XXC
Finish: Cafe Blanco

PETITE CORDOVA
Dimensions: 65" w x 84" h x 36" d



Pictured above: #023-20-N-CN-XXC
Finish: Canyon

REDUCED CORDOVA
Dimensions: 76" w x 81 1/2" h x 41" d



Pictured above: #073-01-N-CB-XXC
Finish: Cafe Blanco

MARIPOSA
Dimensions: 65" w x 66 1/2" h x 36" d



Pictured above: #015-01-N-SD-XXC
Finish: Sedona

PHOENIX w/ BACK VENTING
Dimensions: 65" w x 56 1/2" h x 36" d

***See page #13 and #14 for available media, accessories and finish options.**

Note: American Fyre Designs products are individually handcrafted and finishes shown are subject to slight texture and color variation.

Fireplace venting options **V**=Vented **VF**=Vent Free



Pictured above: #017-01-N-SM-XXC
Finish: Smoke

PHOENIX

Dimensions: 65" w x 84" h x 36" d



Pictured above: #818-05-N-SD-XXC
Finish: Sedona

GRAND PHOENIX

Dimensions: 113" w x 84" h x 36" d



Pictured above: #868-05-N-SD-XXC
Finish: Sedona

GRAND MARIPOSA

Dimensions: 113" w x 66" h x 36" d



Pictured above: #022-20-N-CB-XXC
Finish: Cafe Blanco

CORDOVA

Dimensions: 76" w x 95" h x 41" d



Pictured above: #882-35-N-CB-XXC
Finish: Cafe Blanco

GRAND CORDOVA

Dimensions: 110" w x 95" h x 41" d



Pictured above: #865-10-N-TS-XXC
Finish: Tuscan Slate

GRAND PETITE CORDOVA

Dimensions: 127" w x 84" h x 36" d

*See page #13 and #14 for available media, accessories and finish options.

SPECIAL FIREPLACES



Pictured above: Manhattan Fireplace (082-SB-N-SM-LBXC) in Smoke Finish with Clear Diamond Nuggets (3-GLD-10-C)



Pictured above: #040-11-A-WC-RBC
Finish: White Concrete Only!

V VF



Pictured above: #045-11-A-WC-RBC
Finish: White Concrete Only!

V VF



Pictured above: #082-SB-N-SM-LBXC
Finish: Smoke

V



Pictured above: #010-11-N-TS-XXC
Finish: Tuscan Slate

V VF

CONTRACTOR'S MODEL
Dimensions: 67" w x 96" h x 37" d

CONTRACTOR'S MODEL
(WITH MOULDING)
Dimensions: 67" w x 96" h x 37" d

MANHATTAN
Dimensions: 59" w x 42" h x 31" d

CHICA
Dimensions: 39" w x 72" h x 30" d

**See page #14 for available accessories.*

Note: American Fyre Designs products are individually handcrafted and finishes shown are subject to slight texture and color variation.

Fireplace venting options V=Vented VF=Vent Free

FIREFALLS



Pictured above: Arch Stone Firewall (696-SD-12-V4XC) in Sedona Finish with Lavender Diamond Nuggets



Pictured above: #691-CB-12-V4XC
Finish: Cafe Blanco

LARGE FIREFALL

Dimensions: 65" w x 73" h x 28" d
BTU ratings: 60,000 (NG), 50,000 (LP)



Pictured above: #696-SD-12-V4XC
Finish: Sedona

SMALL FIREFALL

Dimensions: 48" w x 50" h x 25" d
BTU ratings: 60,000 (NG), 50,000 (LP)



Pictured above: #092-CB-12-V4XC
Finish: Cafe Blanco

(No water feature) ARCH STONE FIREWALL

Dimensions: 60" w x 56" h x 26" d
BTU ratings: 60,000 (NG), 50,000 (LP)
Available in Heavy Texture Finishes only

*Small and Large Firefalls include water reservoir, PVC piping, pump, low voltage transformer/timer, and light fixture with bulb.

FIRETABLES



Pictured above: Inverted Dining Height Firetable (630-SL-21-V2XC) in Silverado Finish with Tropical Brown granite inserts and Copper Reflective Fyre Glass (2-GL-10-QR)



Pictured above: #610-TS-11-V2XC
Finish: Tuscan Slate
with Concrete top

AMPHORA FIRETABLE

Dimensions: 48" dia x 23" h
BTU ratings: 60,000 (NG), 50,000 (LP)



Pictured above: #630-SL-21-V2XC
Finish: Silverado
with Tropical brown granite inserts

INVERTED FIRETABLE

Dimensions: 48" dia x 23" h (chat) / 60" dia x 29" h (dining)
BTU ratings: 60,000 (NG), 50,000 (LP)



Pictured above: #770-CB-11-V2XC
Finish: Cafe Blanco

FIESTA FIRETABLE

Dimensions: 54" dia x (28" h dining) (25" h chat)
BTU ratings: 60,000 (NG), 50,000 (LP)

***See page #13 and #14 for available media, accessories and finish options.**

Note: American Fyre Designs products are individually handcrafted and finishes shown are subject to slight texture and color variation.



Pictured above: #645-BA-11-V2XC
Finish: Black Lava

COSMO ROUND

Dimensions: 48" dia x 24" h
BTU ratings: 60,000 (NG), 50,000 (LP)



Pictured above: #640-SM-11-V2XC
Finish: Smoke

COSMO SQUARE CHAT TABLE

Dimensions: 36" w x 24" h x 36" d
BTU ratings: 60,000 (NG), 50,000 (LP)



Pictured above: #642-SM-11-V2XC
Finish: Smoke

COSMO SQUARE DINING TABLE

Dimensions: 60" w x 29" h x 60" d
BTU ratings: 60,000 (NG), 50,000 (LP)



Pictured above: #635-SL-11-V4XC
Finish: Silverado

COSMO RECTANGLE

Dimensions: 54" w x 24" h x 36" d
BTU ratings: 60,000 (NG), 50,000 (LP)



Pictured above: #782-SM-11-V2XC
Finish: Smoke

CONTEMPO ROUND

Dimensions: 47" dia x 15½" h
BTU ratings: 60,000 (NG), 50,000 (LP)



Pictured above: #783-SM-11-V4XC
Finish: Smoke

CONTEMPO RECTANGLE

Dimensions: 52" w x 15½" h x 36" d
BTU ratings: 60,000 (NG), 50,000 (LP)



Pictured above: #626-CB-11-V2XC
Finish: Cafe Blanco
with Concrete top

OCTAGON FIRETABLE

Dimensions: 54" dia x 24" h
BTU ratings: 60,000 (NG), 50,000 (LP)



Pictured above: #650-SD-11-V4XC
Finish: Sedona

RECTANGULAR FIRETABLE

Dimensions: 48" w x 23" h x 27" d
BTU ratings: 60,000 (NG), 50,000 (LP)



Pictured above: #725-BA-11-V2XC
Finish: Black Lava

VORO FIRETABLE

Dimensions: 36" w x 24" h x 36" d
BTU ratings: 60,000 (NG), 50,000 (LP)

*See page #13 and #14 for available media, accessories and finish options.

ARTISAN GLASS EDITION

HAND LAID TILE OPTIONS



Blue-tone Offset Glass (-31)



Earth-tone Small Pebbles (-51)



Mirror Glass Chip (-41)

Pictured above: Amphora Firetable in Sedona Finish (612-SD-51-V2XC) with Earth-tone Small Pebbles table top and Clear Diamond Nuggets (2-GLD-10-C)



Pictured above: #692-CB-61-V4XC
Finish: Cafe Blanco

LARGE FIREFALL (Mirror Chip & Pebbles)

Dimensions: 65" w x 73" h x 28" d
BTU ratings: 60,000 (NG), 50,000 (LP)



Pictured above: #697-BA-31-V4XC
Finish: Black Lava

SMALL FIREFALL (Blue-tone Glass Offset)

Dimensions: 48" w x 50" h x 25" d
BTU ratings: 60,000 (NG), 50,000 (LP)



Pictured above: #612-SD-51-V2XC
Finish: Sedona

AMPHORA FIRETABLE (Earth-tone Small Pebbles)

Dimensions: 48" dia x 23" h
BTU ratings: 60,000 (NG), 50,000 (LP)



Pictured above: #631-BA-31-V2XC
Finish: Black Lava

INVERTED FIREFALL (Blue-tone Offset Glass)

Dimensions: 48" dia x 23" h
BTU ratings: 60,000 (NG), 50,000 (LP)

***See page #13 and #14 for available media, accessories and finish options.**

Note: American Fyre Designs products are individually handcrafted and finishes shown are subject to slight texture and color variation.

NEST COLLECTION



Pictured above: Nest Lanterns (715-SD-11-V1XC) in Sedona Finish



Pictured above: #715-SM-11-V1XC
Finish: Smoke

NEST LANTERN

Dimensions: 16" w x 66" h x 16" d
BTU ratings: 30,000 (NG), 20,000 (LP)



Pictured above: #711-SL-11-V2XC
Finish: Silverado

NEST SQUARE

Dimensions: 36" w x 24" h x 36" d
BTU ratings: 60,000 (NG), 50,000 (LP)



Pictured above: #712-SL-11-V4XC
Finish: Silverado

NEST RECTANGLE

Dimensions: 48" w x 24" h x 28" d
BTU ratings: 60,000 (NG), 50,000 (LP)

**See page #13 and #14 for available media, accessories and finish options.*

FIRE URNS



Pictured above: Amphora Fire Urn (660-SD-11-V2XC) in Sedona Finish with Lava Granules (2-LFC-10)



Pictured above: #765-CB-11-V2XC
Finish: Cafe Blanco

PIAGE URN & PEDESTAL

Dimensions: 26" w x 58" h x 18 3/4" d
BTU ratings: 60,000 (NG), 50,000 (LP)

Available in Heavy Texture Finishes only



Pictured above: #660-SD-11-V2XC
Finish: Sedona

AMPHORA FIRE URN

Dimensions: 22" dia x 29" h
BTU ratings: 60,000 (NG), 50,000 (LP)



Pictured above: #762-BA-11-V2XC
Finish: Black Lava

ETRUSCAN FIRE URN

Dimensions: 26" dia x 27" h
BTU ratings: 60,000 (NG), 50,000 (LP)

Available in Heavy Texture Finishes only

*See page #13 and #14 for available media, accessories and finish options.

Note: American Fyre Designs products are individually handcrafted and finishes shown are subject to slight texture and color variation.

FIREPITS



Pictured above: Contractor's Model Firepit (685-CB-11-V2XC) w/stone veneer



Pictured above: #685-CB-11-V2XC
Finish: Cafe Blanco

**CONTRACTOR'S MODEL
FIREPIT** (Add your own stone veneer)
Dimensions: 39" dia x 14½" h
BTU ratings: 60,000 (NG), 50,000 (LP)



Pictured above: #680-SD-11-V2XC
Finish: Sedona

CHISELED FIREPIT
Dimensions: 39" dia x 14½" h
BTU ratings: 60,000 (NG), 50,000 (LP)



Pictured above: #681-CB-11-V2XC
Finish: Cafe Blanco

EL DORADO FIREPIT
Dimensions: 39" dia x 14½" h
BTU ratings: 60,000 (NG), 50,000 (LP)



Pictured above: #732-CB-11-V2XC
Finish: Cafe Blanco

FIREBOWL
Dimensions: 36" dia x 18" h
BTU ratings: 60,000 (NG), 50,000 (LP)

***NOTE: PROPANE models may require tank table and hose. Available in Heavy Texture Finishes only. See page #14 for options.**

FIREPLACE & FIRETABLE MEDIA

Fyre Glass



Fyre Gems



Diamond Nuggets



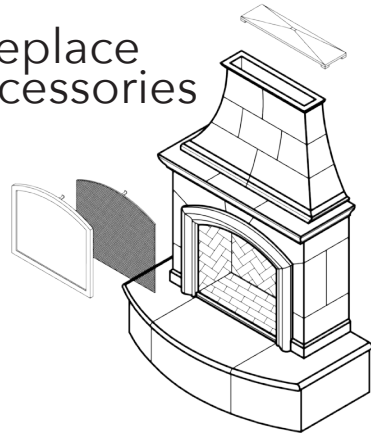
Gas log sets & stones



Note: American Fyre Designs products are individually handcrafted and finishes shown are subject to slight texture and color variation.

ACCESSORIES & AVAILABLE COLORS

Fireplace Accessories



Chimney Rain Vent cap

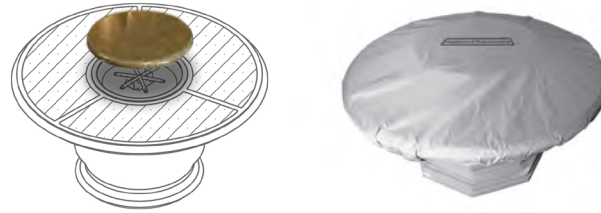


Protector Plate



Scroll Screen

Fabric Covers & Glass Fiber Reinforced Concrete (GRFC) Covers



Tank End Tables



Pictured above: 8500-CB
Finish: Cafe Blanco

Amphora Tank/
End table

Pictured above: 8510-SD
Finish: Sedona

Contempo Tank/
End table

Pictured above: 8199-CB
Finish: Cafe Blanco

Rain Drum Tank/
End table

Wind Guards for Fire Tables



Rectangular Glass
Wind Guard
Part # 8204-WG



Square Glass
Wind Guard
Part # 8202-WG

Available Colors and Textures

Heavy Texture Finish



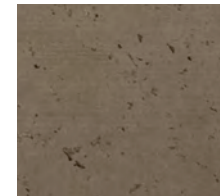
Cafe Blanco (CB)



Sedona (SD)



Black Lava (BA)

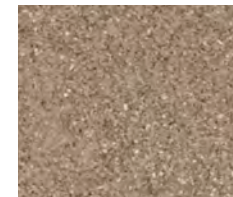


Smoke (SM)

Sand Finish



Canyon (CN)



Villa (VA)



Silverado (SL)



Tuscan Slate (TS)



AMERICAN FYRE DESIGNS LIMITED WARRANTY HIGHLIGHTS

THREE (3) YEAR WARRANTY

AMERICAN FYRE DESIGNS EXTERIOR FIREPLACES, FIRE TABLES, FIRE URNS, FIRE PITS, FIREWALLS AND FIREFALLS ARE WARRANTED FOR THREE (3) YEARS

ONE (1) YEAR WARRANTY

AMERICAN FYRE DESIGNS BURNERS, ELECTRONIC COMPONENTS, & VALVES ARE WARRANTED FOR ONE (1) YEAR

THIS WARRANTY APPLIES TO THE ORIGINAL PURCHASER WITH INVOICE OR PROOF OF PURCHASE AND TO SINGLE FAMILY RESIDENTIAL USE ONLY. FOR ADDITIONAL INFORMATION REGARDING THIS WARRANTY, OR TO PLACE A WARRANTY CLAIM CONTACT YOUR AUTHORIZED AFD DEALER

AMERICAN FYRE DESIGNS™
by R H Peterson co.

14724 PROCTOR AVE., CITY OF INDUSTRY, CA 91746
WWW.AMERICANFYREDESIGNS.COM

CRAFTED WITH PRIDE  IN THE USA